

THE SCHOOL DISTRICT OF OSCEOLA COUNTY, FLORIDA

817 Bill Beck Boulevard • Kissimmee • Florida 34744-4492
Phone: 407-870-4600 • Fax: 407-870-4010 • www.osceolaschools.net

SCHOOL BOARD MEMBERS

- District 1 – Teresa “Terry” Castillo
407-577-5022
District 2 – Kelvin Soto – Chair
407-870-4009
District 3 – Tim Weisheyer – Vice Chair
407-361-0235
District 4 – Clarence Thacker
407-870-4009
District 5 – Ricky Booth
407-870-4009



Superintendent of Schools
Dr. Debra P. Pace

Agenda

Business Advisory Board Meeting

Via WebEx
Meeting Details on next page

Wednesday, September 23, 2020
7:30 A.M.

1. Approve Minutes of August 26, 2020
2. Recommended Amendment of By-Laws
3. Review Impact Fee & Sales Tax Report
4. Facilities Update
5. Budget Update
6. Next regular meeting: Wednesday, October 28, 2020

Business Advisory Board WebEx Meeting Information

Meeting link:

<https://osceolaschools.webex.com/osceolaschools/j.php?MTID=mebdcd32b7165cad26fe813edaddb81a2>

Meeting number:

173 490 4805

Password:

y8GrXPbJD54

Host key:

624812

More ways to join

Join by video system

Dial 1734904805@osceolaschools.webex.com

You can also dial 173.243.2.68 and enter your meeting number.

Join by phone

+1-408-418-9388 United States Toll

Access code: 173 490 4805

Global call-in numbers

BUSINESS ADVISORY BOARD MINUTES
AUGUST 26, 2020

Members Present: Shawn Hindle, Turner Wallis, Mel Welch, and Brian Horton

Others/Guests: Dr. Debra Pace, Clarence Thacker, Sarah Graber, Marc Clinch, Mark Lockard, Rhonda Blake, Randy Shuttera, Luz Skerrett

Location: via WebEx

Mr. Turner called the meeting to order.

Introductions

- **Minutes**

The minutes from the May 27, 2020, meeting were approved with all ayes.

Ms. Graber reminded the BAB members that a quorum was not present at the June 24, 2020 meeting, and therefore, there are no official minutes from that meeting to be approved. The BAB did not meet during the month of July 2020.

- **Impact Fee and Sales Tax Reports**

Ms. Graber reviewed the Impact Fee & Sales Tax Reports as of June 30, 2020 (end of Fiscal Year 2019-20)

Impact Fee Revenues

June Collections approx. **\$ 4.1M**

Impact Fee Expenditures

FYTD Expenditures Approx. **\$13M**

Impact Fee Credits

Approx. **\$13,475K** outstanding

Infrastructure Sales Surtax Revenue

June Collections approx. **\$ 732K**

Infrastructure Sales Surtax Expenditures (1/4 cent)

Approx. spent for FYTD **\$13M**

School Capital Outlay Surtax Revenue

June Collections approx. **\$1.4M**

School Capital Outlay Surtax Expenditures (1/2 cent)

FYTD Expenditures approx.: **\$54M**

Ms. Graber mentioned that the district selected a new consulting firm to perform the next impact fee study which is scheduled to begin in January 2021. Sarah informed the BAB Members that the district is issuing another \$75M worth of bonds against the ½ Penny Sales Tax and it will be presented for approval at the September 8, 2020 School Board Meeting. The bond proceeds will be used to expedite priority school comprehensive renovation projects. Mr. Thacker expanded as to the benefits of the District moving forward with a 10-year term, \$75M bond issuance.

- **Superintendent's Update**

Dr. Pace provided an update on Back-to-School. She mentioned overall student enrollment in Digital Learning is 49%. She stated there are challenges in opening the new school year in the midst of a pandemic. She commented on some issues with technology, but is confident the district will stay focused on its mission of teaching and learning for our students.

Superintendent Pace also stated she will continue to monitor the local economy and what that means for the District budget for the long term. She specified, the District is looking for ways to increase the fund balance in order to better prepare for anticipated budget cuts.

BUSINESS ADVISORY BOARD MINUTES
AUGUST 26, 2020

- **Facilities Update & Planning Department**

Mr. Clinch provided an update on numerous projects completed over the summer that represented approximately \$110M. Mr. Clinch mentioned some challenges with projects at Celebration High School and the Poinciana Business Academy, but reassured the BAB Members the projects are continuing to move forward.

Rhonda Blake presented a Planning Department update on several potential school sites in the St. Cloud area. Ms. Blake provided an update on Real Estate Land Acquisition/Disposition of 130 acres on Nova Road. She also mentioned that the District is still looking for a school site in the Westside area.

Mr. Clinch presented additional information on Projects in Pre-Planning. Mr. Lockard provided an update on construction projects done during the summer. He presented pictures on the progress of the comprehensive renovations at Denn John Middle and St. Cloud Middle, as well as the Osceola Business Academy at Poinciana High School. In addition, information was provided on the Poinciana Central Energy Plant and Poinciana Football Field Drainage and Resurface projects.

- **Budget Update**

Ms. Graber provided an update on Sales Tax numbers for the month of July and a comparison to previous year's collections.

- ½ Sales Tax collection **\$1.7M**
- May collections were down from the previous year by **55%**
- June collections were down from the previous year by **40%**
- July collections were down from the previous year by **31%**

She presented an update on the overall positive reviews of the Internal Audit for the ½ cent Sales Tax program. The report will be presented to the Audit Advisory Committee, and then the School Board and public, once the report is finalized. Ms. Graber thanked the BAB Members for their participation and feedback provided through the auditor's survey.

Ms. Graber reiterated that the District's is strategically increasing the fund balance in preparation for anticipated revenue cuts. The Annual Financial Report and Final Budget will go to the Board for approval at the September 8, 2020 school board meeting. She stated that the District received \$17M in federal CARES Act dollars and has allocated the funds to digital devices, PPE, simultaneous teaching supplements, and other operational costs.

She also stated the District's new healthcare program will go into effect on October 1, 2020 and the District is already seeing a reduction in our healthcare expenditure trend due to programs implemented throughout the past year.

BAB Meeting Dates

The Business Advisory Board has agreed to meet the 4th Wednesday of every month. **The next meeting will be held on Wednesday, September 23, 2020 at 7:30 a.m. via WebEx.**

DRAFT

THE SCHOOL DISTRICT OF OSCEOLA COUNTY, FLORIDA BUSINESS ADVISORY ~~BOARD~~ ~~COMMITTEE~~ BY-LAWS

I. Membership Categories

- Realtor
- Appraiser
- Engineer
- Architect
- Landscaping Specialist
- Accountant
- Builder
- Developer
- General Contractor
- Surveyor
- Planner
- Lawyer
- Construction Trade Business
- Or other field possessing such skills as would assist in the evaluation of capital expenditures

II. Qualifications for Membership

- Resident of Osceola County or an employee of a company doing business in Osceola County
- Proof of expertise/licensure in field represented
- Currently not employed or under contract to provide services to Osceola County Public Schools
- Demonstrated familiarity with and/or voluntary service to Osceola County Public Schools
- Skills to assist

III. Meetings and Attendance

1. Any member who misses three consecutive meetings or more than 25 percent of the regular meetings during the year may be replaced by the School Board. ~~from the pool of qualified applicants on file.~~
2. The board shall meet at least four times a year and elect a chairman and vice-chairman who will serve for one year. The school ~~district board~~ shall provide secretarial support. Attendance and minutes for each meeting shall be maintained and provided to members, the superintendent and the school board. The Board

DRAFT

shall operate in compliance with Florida's Sunshine and Open Records Laws.

IV. Duties and Responsibilities

1. Review and report on the capital outlay budget, particularly as it relates to the expenditures of school impact fees and local sales tax.
2. Review and report on issues and practices related to the fields of expertise represented on the board, such as site selection, construction, investments, purchasing, as requested by the superintendent or school board.
3. Review and make recommendations regarding all the annual reviews of the school impact fee ordinance and studies.
- 3.4. Provide review and monitoring of the sales tax program.

V. Appointment Process

1. Applications will be solicited from the community at large, including civic and community groups. Four recommendations for appointees will be solicited from the Board of County Commissioners and three recommendations from the School Board.
2. Applications, including a brief resume, for school board appointments will be returned to the ~~Assistant Superintendent of Business and Fiscal Services~~ Chief Business and Finance Officer.
3. The ~~Assistant Superintendent~~ Chief Business and Finance Officer will submit ~~a list of~~ qualified applicants, ~~by category,~~ to the school board. The school board will select appointees on a consensus basis.
4. Throughout the year, applications will be accepted and kept on file ~~for 2 years~~ to fill future vacancies. ~~for the Assistant Superintendent will provide the board with a list of Q~~qualified applicants will be provided to the school board for any vacancy which occurs.
5. The school board appointee terms will begin February 1. The county appointee terms date will begin April 1.

DRAFT

THE SCHOOL DISTRICT OF OSCEOLA COUNTY, FLORIDA BUSINESS ADVISORY BOARD BY-LAWS

I. Membership Categories

- Realtor
- Appraiser
- Engineer
- Architect
- Landscaping Specialist
- Accountant
- Builder
- Developer
- General Contractor
- Surveyor
- Planner
- Lawyer
- Construction Trade Business
- Or other field possessing such skills as would assist in the evaluation of capital expenditures

II. Qualifications for Membership

- Resident of Osceola County or an employee of a company doing business in Osceola County
- Proof of expertise/licensure in field represented
- Currently not employed or under contract to provide services to Osceola County Public Schools
- Demonstrated familiarity with and/or voluntary service to Osceola County Public Schools
- Skills to assist

III. Meetings and Attendance

1. Any member who misses three consecutive meetings or more than 25 percent of the regular meetings during the year may be replaced by the School Board.
2. The board shall meet at least four times a year and elect a chairman and vice-chairman who will serve for one year. The school district shall provide secretarial support. Attendance and minutes for each meeting shall be maintained and provided to members, the

DRAFT

superintendent and the school board. The Board shall operate in compliance with Florida's Sunshine and Open Records Laws.

IV. Duties and Responsibilities

1. Review and report on the capital outlay budget, particularly as it relates to the expenditures of school impact fees and local sales tax.
2. Review and report on issues and practices related to the fields of expertise represented on the board, such as site selection, construction, investments, purchasing, as requested by the superintendent or school board.
3. Review and make recommendations regarding all reviews of the school impact fee ordinance and studies.
4. Provide review and monitoring of the sales tax program.

V. Appointment Process

1. Applications will be solicited from the community at large, including civic and community groups. Four recommendations for appointees will be solicited from the Board of County Commissioners and three recommendations from the School Board.
2. Applications, including a brief resume, for school board appointments will be returned to the Chief Business and Finance Officer.
3. The Chief Business and Finance Officer will submit qualified applicants to the school board. The school board will select appointees on a consensus basis.
4. Throughout the year, applications will be accepted and kept on file to fill future vacancies. Qualified applicants will be provided to the school board for any vacancy which occurs.
5. The school board appointee terms will begin February 1. The county appointee terms date will begin April 1.

Rev. 10/6/2020

**SDOC Business Advisory Board
Impact Fee Revenue
For the period ended 07/31/2020**

| MONTH | Fiscal Year | | | | | | | |
|--------------|----------------------|--------------|----------------------|--------------|----------------------|--------------|---------------------|------------|
| | 2017 - 2018 | | 2018 - 2019 | | 2019 - 2020 | | 2020 - 2021 | |
| | Revenue | Units* | Revenue | Units* | Revenue | Units* | Revenue | Units* |
| July | \$ 3,197,541 | 375 | \$ 2,385,492 | 267 | \$ 10,863,004 | 1,123 | \$ 6,324,659 | 675 |
| August | 2,963,407 | 313 | 4,726,773 | 488 | 5,697,497 | 628 | | |
| September | 2,987,439 | 296 | 7,804,166 | | 7,885,645 | 797 | | |
| October | 2,076,217 | 216 | 7,679,304 | 713 | 6,923,523 | 731 | | |
| November | 2,942,186 | 295 | 9,018,833 | 952 | 5,858,840 | 584 | | |
| December | 4,902,215 | 635 | 6,132,620 | 610 | 5,076,853 | 560 | | |
| January | 3,566,327 | 439 | 4,893,678 | 483 | 4,668,053 | 547 | | |
| February | 1,180,911 | 118 | 6,609,701 | 685 | 4,722,382 | 458 | | |
| March | 2,624,898 | 288 | 6,213,597 | 610 | 7,787,661 | 837 | | |
| April | 3,044,872 | 328 | 6,268,996 | 635 | 7,099,622 | 633 | | |
| May | 4,807,734 | 420 | 6,613,496 | 706 | 3,627,116 | 378 | | |
| June** | 6,212,200 | 645 | 6,062,604 | 621 | 4,177,704 | 481 | | |
| TOTAL | \$ 40,505,947 | 4,368 | \$ 74,409,260 | 6,770 | \$ 74,387,899 | 7,757 | \$ 6,324,659 | 675 |

| Number of Units Detail | | | | |
|--------------------------|------------|----------------|-------------------|------------------|
| Type of dwelling | Total | Osceola County | City of Kissimmee | City of St Cloud |
| Single Family | 389 | 307 | | 82 |
| Single Family-S/T rental | 10 | 10 | | |
| Single Family-Credits | 0 | | | |
| Townhomes | 85 | 51 | 5 | 29 |
| Townhomes-S/T rental | 8 | 8 | | |
| Condominiums | 68 | 68 | | |
| Multifamily | 114 | 114 | | |
| Mobile Homes | 1 | 1 | | |
| Total | 675 | 559 | 5 | 111 |

*Number of Units as computed based on reports received by the City of Kissimmee, City of St. Cloud, and Osceola County

**Accrual

| Budget | |
|-----------------------|---------------|
| Final Budget: Revenue | \$ 50,000,000 |

**SDOC Business Advisory Board
Impact Fee Expenditures
For the period ended 07/31/2020**

| PROJECT NAME | Fiscal Year | | | |
|--|----------------------|----------------------|----------------------|------------------|
| | 2017 - 2018 | 2018 - 2019 | 2019 - 2020 | 2020 - 2021 |
| Debt Service | \$ - | \$ - | \$ - | \$ - |
| Other: | | | | |
| Buses | 849,052 | 1,850,948 | 822,176 | |
| Canoe Creek K-8 | | | 1,167,050 | 4,952 |
| Celebration Island Village | | 709,005 | 40,856 | |
| Discovery Intermediate Space Reconfiguration | 633,528 | | | |
| Harmony Middle School - "Middle School AA" | 7,502,242 | 26,882,586 | 2,607,661 | |
| Kindred K-8 | | 2,125 | | |
| NeoCity Academy | 631,489 | 13,936,386 | 2,578,168 | |
| Poinciana High School Wing Addition | 1,910,466 | | 6,023,094 | 46,831 |
| Tohopekaliga High School | 50,803,419 | 8,587,940 | 113,141 | |
| Westside K-8 Renovation | 702,517 | | | |
| Subtotal Other: | \$ 63,032,713 | \$ 51,968,990 | \$ 13,352,146 | \$ 51,783 |
| TOTAL | \$ 63,032,713 | \$ 51,968,990 | \$ 13,352,146 | \$ 51,783 |

**SDOC Business Advisory Board
Outstanding Impact Fee Credits
For the period ended 07/31/2020**

| Entity | Beg. Balance | Issued | Ending Balance |
|--------------------------------------|---------------------|---------------------|-----------------------|
| Bellalago/Taylor Morrison-countywide | \$ 7,754,000 | \$ 7,754,000 | \$ - |
| KOA/Avatar | 831,695 | 818,220 | 13,475 |
| TOTAL | \$ 8,585,695 | \$ 8,572,220 | \$ 13,475 |

**SDOC Business Advisory Board
School Capital Outlay Surtax Revenue (1/2 Cent)
For the period ended 07/31/2020**

| MONTH | Fiscal Year | | | |
|--------------|----------------------|----------------------|----------------------|---------------------|
| | 2017 - 2018 | 2018 - 2019 | 2019 - 2020 | 2020 - 2021 |
| July | \$ 2,859,082 | \$ 3,247,344 | \$ 3,306,679 | \$ 2,707,399 |
| August | 2,194,580 | 2,362,698 | 2,454,871 | |
| September | 2,154,461 | 2,107,519 | 2,186,347 | |
| October | 2,664,318 | 2,906,958 | 2,945,535 | |
| November | 2,083,815 | 2,183,394 | 2,346,396 | |
| December | 2,206,964 | 2,252,301 | 2,355,790 | |
| January | 3,339,209 | 3,545,302 | 3,683,419 | |
| February | 2,495,202 | 2,281,362 | 2,446,420 | |
| March | 2,066,220 | 2,321,866 | 2,474,997 | |
| April | 3,596,735 | 3,750,979 | 2,812,989 | |
| May | 2,354,643 | 2,496,898 | 1,116,246 | |
| June* | 2,207,039 | 2,420,032 | 1,461,649 | |
| TOTAL | \$ 30,222,267 | \$ 31,876,654 | \$ 29,591,338 | \$ 2,707,399 |

| Budget | |
|----------------------------------|---------------|
| Final Budget: Forecasted Revenue | \$ 29,070,602 |

*Accrual

**SDOC Business Advisory Board
Infrastructure Sales Surtax Revenue (1/4 Cent)
For the period ended 07/31/2020**

| MONTH | Fiscal Year | | | |
|--------------|----------------------|----------------------|----------------------|---------------------|
| | 2017 - 2018 | 2018 - 2019 | 2019 - 2020 | 2020 - 2021 |
| July | \$ 1,432,353 | \$ 1,626,416 | \$ 1,653,542 | \$ 1,353,919 |
| August | 1,101,673 | 1,187,951 | 1,229,646 | |
| September | 1,081,142 | 1,051,985 | 1,094,544 | |
| October | 1,366,944 | 1,460,827 | 1,473,660 | |
| November | 1,044,372 | 1,094,073 | 1,173,745 | |
| December | 1,132,027 | 1,128,780 | 1,179,052 | |
| January | 1,649,693 | 1,774,559 | 1,842,450 | |
| February | 1,248,395 | 1,141,399 | 1,224,039 | |
| March | 1,039,021 | 1,164,505 | 1,237,741 | |
| April | 1,799,463 | 1,876,971 | 1,406,608 | |
| May | 1,179,008 | 1,251,681 | 558,604 | |
| June* | 1,107,946 | 1,213,361 | 731,997 | |
| TOTAL | \$ 15,182,037 | \$ 15,972,508 | \$ 14,805,628 | \$ 1,353,919 |

| Budget | |
|----------------------------------|---------------|
| Final Budget: Forecasted Revenue | \$ 14,535,301 |

*Accrual

SDOC Business Advisory Board
School Capital Outlay Surtax Expenditures (1/2 Cent)
For the period ended 07/31/2020

| Type of Expenditure | Fiscal Year | | | |
|---|--------------|---------------|---------------|-----------|
| | 2017-2018 | 2018-2019 | 2019-2020 | 2020-2021 |
| Debt Service | \$ 2,117,995 | \$ 7,037,194 | \$ 7,035,848 | |
| Comprehensive Renovations: | | | | |
| Denn John Middle School | 1,318,044 | 22,605,913 | 11,114,867 | 8,651 |
| Gateway High School | | 71,765 | 388 | 479 |
| Michigan Avenue Elementary School | 6,132,009 | 19,720,411 | 1,639,336 | 4,019 |
| St. Cloud Middle School | 11,319 | 2,417,580 | 23,942,794 | 73,467 |
| Subtotal Comprehensive Renovations | \$ 7,461,372 | \$ 44,815,669 | \$ 36,697,385 | \$ 86,616 |
| Other maintenance & renovation projects: | | | | |
| Carpet Replacements/Flooring: | | | | |
| Boggy Creek Elementary School | \$ - | \$ - | \$ 11,125 | |
| Celebration High School | 113,225.00 | | | |
| Deerwood Elementary School | | | 455,336 | |
| Discovery Intermediate School | | 93,668 | 54,027 | |
| East Lake Elementary School | | | 42,221 | |
| Gateway High School | 56,883 | | | |
| Kissimmee Middle School | | | | 23 |
| KOA Elementary | | | 139,245 | |
| Narcoossee Middle School | 25,400 | | | |
| Neptune Middle School | 325,215 | | | 16,064 |
| Parkway Middle School | | 149,780 | 139,035 | |
| Pleasant Hill Elementary School | 320,741 | | | |
| Poinciana Academy of Fine Arts | 94,691 | 33,125 | | |
| Reedy Creek Elementary School | 343 | | | |
| Ross E. Jeffries Campus | | 53,648 | | |
| St Cloud Elementary | | | 142 | 200,897 |
| Sunrise Elementary School | | | 265,345 | |
| Westside K-8 | | | 1,493 | |
| Zenith | | 20,758 | | 20,486 |
| Chiller Replacements: | | | | |
| Celebration K-8 School | 688,956 | | | |
| Celebration High School | | | 1,068,923 | 77,500 |
| Central Elementary School | | | 19,249 | |
| Cypress Elementary School | | | 214,067 | |
| Discovery Intermediate School | | | 223,357 | |
| Flora Ridge Elementary School | | | 235,421 | 1,092 |
| Horizon Middle School | 83,172 | | 205,514 | |
| Kissimmee Elementary School | | 188,032 | 251,506 | |
| Kissimmee Middle School | 147,998 | 66,254 | | |
| Liberty High School | | 84,497 | 187,192 | |
| Poinciana Academy of Fine Arts | | 302,758 | 254,165 | |
| Poinciana High School | 96,113 | 4,695 | 2,644,442 | |
| Fencing: | | | | |
| Boggy Creek Elementary School | 3,114 | 2,221 | | |
| Celebration High School | 740 | 833 | | |
| Celebration K-8 School | | 27,030 | | |
| Central Elementary School | 2,807 | 8,952 | 557 | |
| Cypress Elementary School | | | 5,354 | |
| Deerwood Elementary School | | | 25,314 | |
| East Lake Elementary School | | | 41,773 | |
| Flora Ridge Elementary School | | | 29,083 | |
| Gateway High School | | 12,815 | | |
| Harmony Community School | | 33,086 | | |
| Harmony High School | 2,645 | 12,083 | 23,152 | |
| Hickory Tree Elementary School | | 24,664 | | |
| Highlands Elementary | 1,852 | 57,099 | 16,449 | |
| Horizon Middle School | | 16,820 | | |

**SDOC Business Advisory Board
School Capital Outlay Surtax Expenditures (1/2 Cent)
For the period ended 07/31/2020**

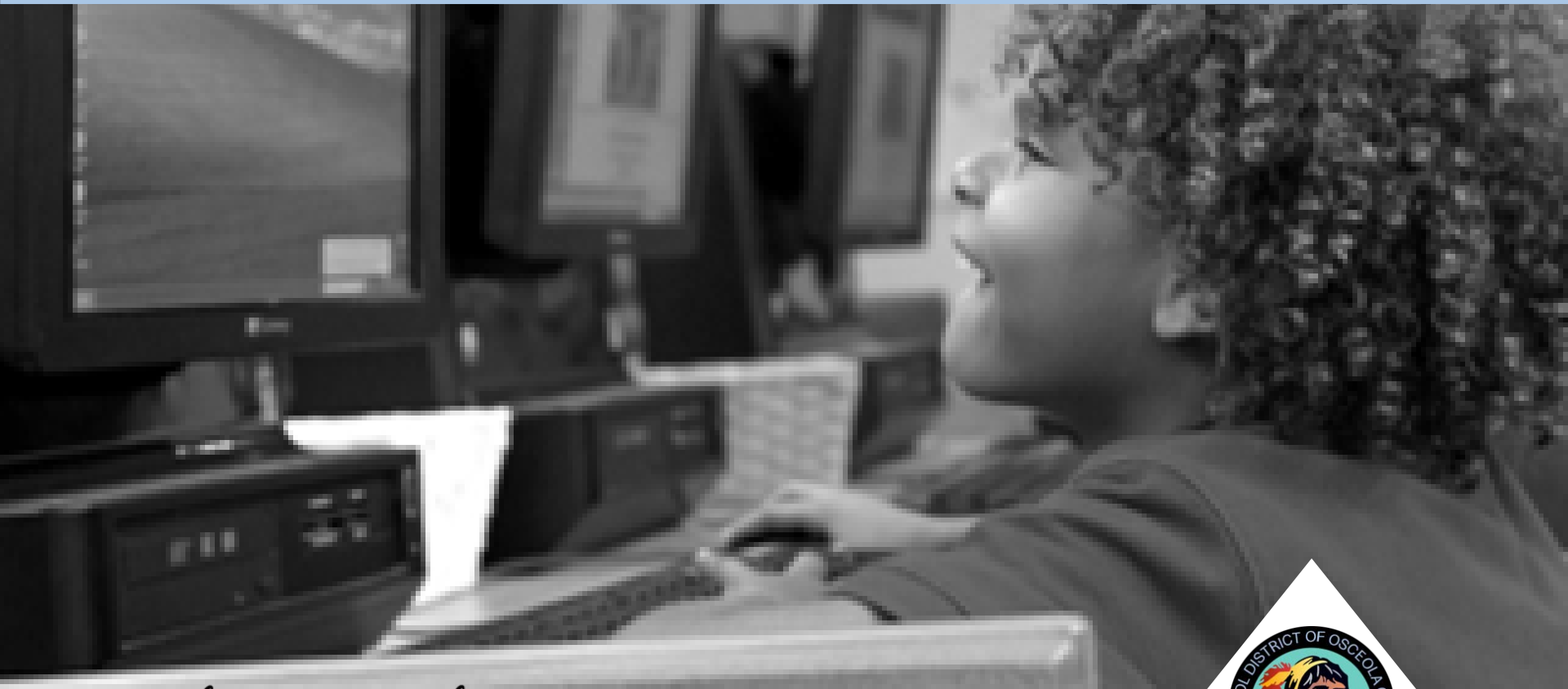
| Type of Expenditure | Fiscal Year | | | |
|---------------------------------|-------------|-----------|-----------|-----------|
| | 2017-2018 | 2018-2019 | 2019-2020 | 2020-2021 |
| Lakeview Elementary School | 1,756 | 53 | 42,148 | 150 |
| Liberty High School | | 16,194 | | |
| Mill Creek Elementary | | | 23,026 | 98 |
| Narcoossee Middle School | 3,072 | 2,160 | | |
| Neptune Middle School | 48,596 | | | |
| PATHS | | | 45,404 | |
| Pleasant Hill Elementary School | | | 2,251 | |
| Poinciana Elementary School | | | 27,326 | |
| Poinciana High School | | 15,558 | | |
| Reedy Creek Elementary School | | 25,703 | 4,003 | 1,453 |
| Ross E. Jeffries Campus | | 42,173 | 375 | |
| St. Cloud High School | 10,900 | 107 | | |
| Sunrise Elementary School | 6,568 | | | |
| Tohopekaliga High School | | | 16,544 | |
| Westside K-8 | | 36,355 | 913 | |
| Zenith | | 4,787 | | |
| Fire Alarms: | | | | |
| Poinciana Academy of Fine Arts | 23,776 | | | |
| HVAC Repairs/Replacements: | | | | |
| Celebration High School | 148,219 | 56,322 | | |
| Celebration K-8 School | | 162,939 | 4,924 | |
| Cypress Elementary School | | | 7,894 | |
| Deerwood Elementary School | | | 7,758 | |
| Discovery Intermediate School | 281,578 | | | |
| Harmony High School | | 3,162 | 4,478 | |
| Horizon Middle School | | | 152,730 | |
| Kissimmee Elementary School | 119,882 | 20,586 | | |
| Kissimmee Middle School | | 66,487 | 152,541 | |
| Liberty High School | | 117,555 | 35,347 | |
| Narcoossee Middle School | | 100,827 | | |
| Neptune Middle School | 8,793 | 3,002 | | |
| oTECH | 7,482 | 60,133 | | |
| Ross E. Jeffries Campus | 6,040 | 1,371 | 23,822 | |
| Ventura Elementary School | | | | 38,831 |
| Painting and/or other projects | | | | |
| ALCO | | 7,616 | 10,915 | |
| Boggy Creek Elementary School | | | | |
| Celebration High School | | 18,685 | 184,120 | |
| Celebration K-8 School | 3,553 | 21,296 | 47,509 | |
| Central Elementary School | 55,858 | | | |
| Chestnut Elementary School | 22,930 | | | |
| Cypress Elementary School | 25,761 | | 41,882 | 2,163 |
| Deerwood Elementary School | | 52,714 | 47,301 | |
| Discovery Intermediate School | 99,037 | 114,620 | | |
| East Lake Elementary School | | | 40,144 | 9 |
| Gateway High School | 12,971 | 757 | | |
| Harmony Community School | 39,935 | | | |
| Harmony High School | 66,648 | 17,710 | | |
| Hickory Tree Elementary School | 72,440 | 21,668 | | |
| Horizon Middle School | 56,091 | 18,138 | 41,517 | |
| Kissimme Elementary School | 32,467 | | 72,387 | |
| Kissimmee Middle School | 50,630 | 217,910 | | |
| KOA Elementary | 45,486 | | 35,446 | 31 |
| Lakeview Elementary School | 1,613 | | | |
| Liberty High School | 136,128 | 18,685 | | |
| Mill Creek Elementary | | | 43,198 | 119 |
| Narcoossee Elementary School | 44,500 | | | |
| Narcoossee Middle School | 129,279 | 21,828 | 64,586 | |
| Neptune Elementary School | 33,755 | | | |
| Neptune Middle School | 8,700 | | | |

**SDOC Business Advisory Board
School Capital Outlay Surtax Expenditures (1/2 Cent)
For the period ended 07/31/2020**

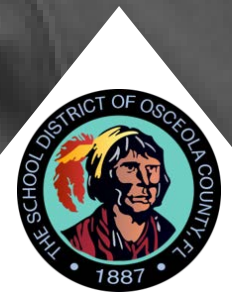
| Type of Expenditure | Fiscal Year | | | |
|---|----------------------|----------------------|----------------------|-------------------|
| | 2017-2018 | 2018-2019 | 2019-2020 | 2020-2021 |
| New Beginnings | 24,187 | | | |
| Osceola High School | | 18,685 | | |
| Osceola County School for the Arts oTECH | | 89,688 | 19,898 | |
| Parkway Middle School | 22,905 | | 44,462 | |
| Partin Settlement Elementary School | 1,649 | | | |
| Pleasant Hill Elementary School | 80,632 | | | 591 |
| Poinciana Academy of Fine Arts | 23,284 | | | |
| Poinciana High School | | 13,333 | 247,884 | |
| Reedy Creek Elementary School | | 32,012 | | |
| Ross E. Jeffries Campus | 6,495 | | | |
| St. Cloud Elementary School | 26,774 | | 67,113 | |
| St. Cloud High School | | | | 140 |
| Sunrise Elementary School | 74,684 | | 225 | |
| Ventura Elementary School | 123,984 | | 60,702 | |
| Westside K-8 | | 86,808 | | |
| Parking Lot Resurface / Bus Loop / Concrete/Drainage: | | | | |
| Boggy Creek Elementary School | 80,052 | | | |
| Central Elementary School | | | 8,429 | 6,677 |
| Chestnut Elementary | 6,818 | | | |
| Countywide | | | 7,929 | |
| Deerwood Elementary School | | | 19,712 | |
| Harmony Community School | | | 4,790 | |
| Hickory Tree Elementary School | | | 4,325 | |
| Horizon Middle School | | | 5,540 | |
| Lakeview Elementary School | | | 7,180 | 1,173 |
| Liberty High School | | | 14,871 | |
| Narcoossee Elementary School | | | 7,035 | 4,391 |
| Narcoossee Middle School | | | 433 | 3,086 |
| Osceola High School | | | 15,615 | |
| oTECH | | | 1,850 | 10,579 |
| Parkway Middle School | | | | 5,865 |
| Poinciana Elementary | | 19,655 | | |
| Thacker Avenue Elementary | | 6,648 | | |
| Transportation | 93,864 | | | |
| Westside K-8 | | | 9,603 | |
| Renovations | | | | |
| Gateway High School | 23,461 | | | |
| Horizon Middle School | | | 8,023 | 7,380 |
| Roofing/Gutters/Covered walkways: | | | | |
| Celebration K-8 School | 945,999 | | | |
| Chestnut Elementary | | 107,400 | | |
| Deerwood Elementary School | 107,771 | | | |
| Discovery Intermediate School | | | 9,082 | |
| Gateway High School | 19,880 | | | |
| Hickory Tree Elementary School | 883 | | | |
| Kissimmee Elementary School | | 500 | 3,300 | |
| Narcoossee Middle School | | | 11,420 | 105,448 |
| Neptune Middle School | | 191,628 | 131,449 | |
| Partin Settlement Elementary School | | 117,000 | | |
| Poinciana Elementary School | | 13,075 | 243,010 | |
| Sunrise Elementary School | | 109,800 | | |
| St Cloud Elementary | | | 59,597 | |
| Safety & Security Equipment | 193,808 | 701,003 | 519,017 | 517 |
| Security Modifications and improvements | 129,378 | 28,153 | 89,099 | |
| Technology Infrastructure | 838,476 | 1,522,770 | 1,263,694 | 54,642 |
| Subtotal Other | \$ 6,393,323 | \$ 5,518,077 | \$ 10,619,263 | \$ 559,405 |
| TOTAL | \$ 15,972,690 | \$ 57,370,940 | \$ 54,352,496 | \$ 646,021 |

Facilities Update

Business Advisory Board
September 23, 2020



Every Child, Every Chance, Every Day!



Planning Services Department Update

- **Mitigation Agreements**
 - Center Lake K-8 school site
 - Sunbridge K-8 school site
 - Osceola County School for the Arts Tri-Party Agreement
- **Real Estate Land Acquisition/Disposition**
 - Purchase and Sale Agreement
 - Nova Road (180-Day Due Diligence)
 - Extended to November 30, 2020
 - Transportation east and high school
 - Discussions
 - 5th Street disposal
 - September 8, 2020 – Purchase and Sale Agreement
 - 365-day due diligence
 - Southwest Osceola County K-8 school acquisition
 - Transportation west acquisition
- **Site Conveyance**
 - Kindred K-8 School Site (January 2021)
 - 2023/2024 Proposed opening

Projects in Pre-Planning

| <u>Project</u> | <u>Budget</u> | <u>Proposed Opening</u> |
|-----------------------------|----------------------|-------------------------|
| Harmony HS Re-configuration | \$TBD | 2022-2023 |
| OCSA Bus Route | \$4,000,000 | TBD |
| Transportation West | \$22,100,000 | TBD |
| Sunbridge K8 | \$43,500,000 | 2023-2024 |
| Westside Relief K8 | \$42,000,000 | 2023-2024 |
| TOTAL | \$111,600,000 | |

Facilities Update

Agenda

- Design & Construction Department Update

| | |
|----------------------------|----------------------|
| • Projects in Planning | \$122,144,000 |
| • Projects in Design | \$9,308,337 |
| • Projects in Construction | <u>\$153,119,899</u> |
| • Current Program | \$284,572,236 |

Projects in Planning

| <u>Project</u> | <u>Budget</u> | <u>Proposed Opening</u> |
|-------------------------------|----------------------|-------------------------|
| GWHS Comprehensive Renovation | \$78,000,000 | 2022-2023 |
| Kindred "AA" K-8 | \$44,144,000 | 2023-2024 |
| OCSA Comprehensive Renovation | TBD | 2023-2024 |
| RCES Comprehensive Renovation | TBD | 2023-2024 |
| TOTAL | \$122,144,000 | |

Projects In Design

| <u>Project</u> | <u>Budget</u> | <u>Construction NTP</u> |
|----------------------------------|--------------------|-------------------------|
| BELA PE Shade Structure | \$22,112 | 6/5/2020 |
| NPMS Rear Bus Loop | \$645,000 | TBD – On Hold |
| HZMS Air Handler Replacement | \$3,935,000 | 11/30/2020 |
| KMMS Air Handler Replacement | \$3,935,000 | 11/30/2020 |
| KMES AC Unit Install | \$62,241 | TBD |
| SCMS Band Bldg Conversion To OVS | \$525,000 | 7/3/2020 |
| VPK Office Remodel at REJE | \$69,513 | TBD |
| PNHS Dressing Rooms | \$14,471 | 8/31/2020 |
| WK8S Network Core Relocation | \$100,000 | 12/14/2020 |
| TOTAL | \$9,308,337 | |

Projects in Construction

| <u>Project</u> | <u>Budget</u> | <u>Substantial Completion</u> |
|----------------------------------|----------------------|-------------------------------|
| CLHS Kitchen/Serving Line | \$1,900,000 | 8/29/2020 (Complete) |
| DJMS Comprehensive Renovation | \$43,085,803 | 8/31/2020 (Complete) |
| MAES Comprehensive Renovation | \$31,186,354 | 8/03/2020 (Complete) |
| SCMS Comprehensive Renovation | \$32,973,602 | 10/12/2020 |
| Canoe Creek K8 Year 1 | \$1,515,540 | 10/31/2020 (Complete) |
| Canoe Creek K8 Year 2 | \$30,021,000 | 12/04/2021 |
| PNHS Osceola Business Academy | \$9,700,000 | 7/22/2020 (Complete) |
| PNHS Football Field Repairs | \$900,000 | 10/30/2020 |
| PNHS Campus Wide Lighting | \$1,500,000 | 3/19/2021 |
| NCES Car Loop Sidewalk Extension | \$7,150 | 10/30/2020 |
| OCHS Bleacher Replacement | \$123,955 | 1/04/2021 |
| NPES Washer & Dryer | \$15,691 | 10/19/2020 |
| NPES Drainage Corrections | \$23,534 | 9/11/2020 (Complete) |
| WK8S Reception Area | \$167,270 | 8/17/2020 (Complete) |
| TOTAL | \$153,119,899 | |

Denn John MS Comprehensive

\$43,085,803



Denn John Middle School
Comprehensive Renovation Project
08-20-20



St Cloud MS Comprehensive

\$32,973,602



727.520.8181
www.aerophoto.com

St Cloud Middle School

Image # 76 22
Date 08.25.2020

Canoe Creek K-8 Year 2

\$30,021,000



Osceola Business School at PNHS

\$9,700,000



PNHS Campus Wide Lighting

\$1,500,000



PNHS Football Field Drainage & Resurface

\$900,000



Celebration High School Kitchen/Serving Lines

\$1,900,000



Every Child, Every Chance, Every Day!



Comments and Discussion